

PORTFOLIO PAST AND PRESENT

VICTORIA HUMPHREYS



Welcome to our new updated Brochure showcasing some of our most memorable projects.

All of the Contracts we have undertaken can be found in our **"Where our Metalwork can be found"** Brochure.

We hope you will enjoy exploring our latest collection of metalwork and we look forward to working alongside you soon, simply send us an email at: estimating@victoriajohnuk.com or hq@victoriajohnuk.com

VICTORIA HUMPHREYS – JOINT M.D.

Welcome

FEATURED PROJECTS



Basildon Bell Tower - Basildon

Acrylic & Metal Balustrade - London

Shakespeare's House, New Place - Stratford Upon Avon

Floating Staircase - Primrose Hill London

Hartley Jam Factory - Bermondsey SE1

Volkswagen Bath Showroom

GBK's - Southampton, Newport & Kensington

Sondheim Theatre - London

Brass Chair Frame for Zoffany - Paris

Jo Hamilton Brass Table - for Jasper Conran Collection

Helical Stainless & Glass Balustrade - Templewood Ave, London

The Bun House - Soho, London



BASILDON BELL TOWER - OPENED BY HRH QUEEN ELIZABETH II.

The Basildon Bell Tower is a unique free-standing faceted glass and steel tower in a neo- gothic design. The earliest bell is understood to date back to the 1400's.

Basildon Bell Tower was opened by Queen Elizabeth II in the summer of 1999.

We provided and installed the Metal Grated Access Platforms within the Tower.

This project was awarded to us by JOHN MOWLEM PLC

OUT OF THE ORDINARY

POWDER COATED ACRYLIC AND METAL
BALUSTRADE WITH A FUMIGATED OAK TOP RAIL

We were awarded this contract to fabricate and install a Metal and Acrylic Balustrade for a property in Hampstead. The Acrylic was a new material for us, but we love a challenge!

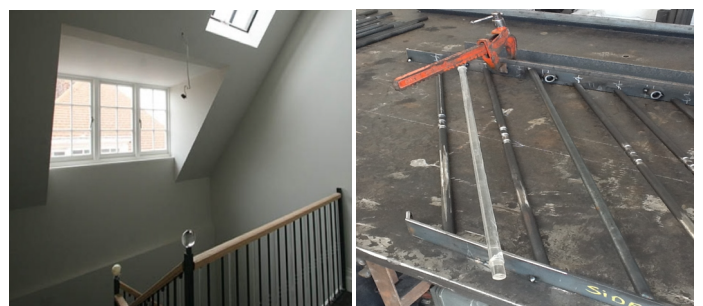
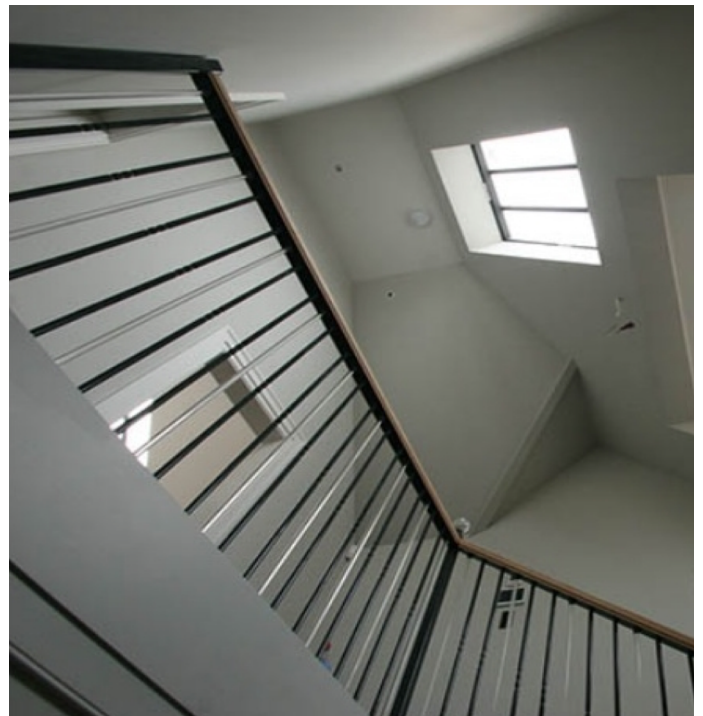
This presented a design challenge for us. The Architect specified a mixture of acrylic and CNC Machined Balusters, within a powder coated finish. The Challenge? How do we fit plastic to steel after the powder coated finish?

We were able to overcome this design specification, by using steel capture rings, which enabled us to bend the acrylic into position after the powder coating.

TESTIMONIAL:

"They undertook a complex balustrading in an existing house. They are a pleasure to work with and pursued this difficult construction with a great deal of perseverance and understanding. Would highly recommend them for future projects."

Damian Maguire Principle Sacks Maguire Architects.

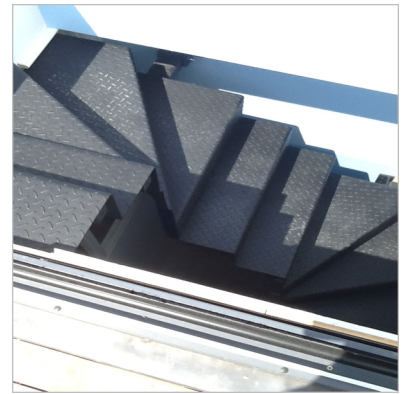
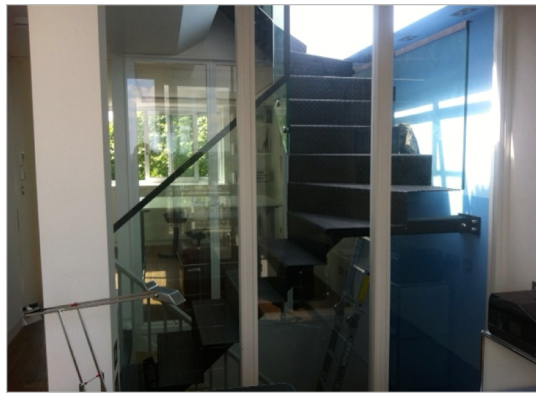




SHAKESPEARE'S HOUSE - NEW PLACE

We fabricated and installed all the bronze work in the Garden including the Front Entrance (Gatehouse) the Bronze and Stainless Steel Well, the Corton Steel Planters, Hand Rail inside the Building, Window Frame, Patio Arcs in Bronze and Stainless and the Stainless Steel Ring for the Ship.





ARCHITECTURALLY DESIGNED DOUBLE WINDER FLOATING STAIRCASE

Primrose Hill is a hill of 256 feet located on the northern side of Regent's Park in London, with fantastic views over central London.

It is one of the most exclusive and expensive residential areas in London and is home to many prominent residents.

Our brief was to produce and install a double winder floating steel staircase finished in powder coated crinkle black finish with a glass balustrade, leading up to the roof garden. A crane was required to enable us to access the skylight and install the staircase.

Damian Maguire Architects, whom we have worked with previously, on the metal and acrylic balustrade, gave us the brief for this project. It was to be of an industrial appearance. Following this brief, we constructed the staircase from Hot-rolled Durbar floor plate.

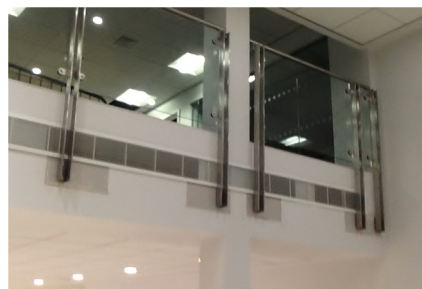
Contractor was Towns Construction. We were recommended to Towns by Damian Maguire Architects.

The Durbar floor plate gives excellent slip resistance, has an evenly distributed floor pattern and excellent welding properties

HARTLEY JAM FACTORY

The Jam Factory is a warehouse conversion in Bermondsey SE1. It is an Edwardian building that has been converted into live/work units.

We provided the coping flashings, internal staircases, internal balustrades, external railings (as shown), the Porters Lodge Concierge and various structural steel throughout the project.



VOLKSWAGON BATH SHOWROOM 2014

We were employed by Charnwood Group to produce a Stainless Steel and Glass Balustrade to Showroom, Cat Ladder, Internal Staircase to Parts Department, Handrail to Customer Steps and Bicycle Hoops.

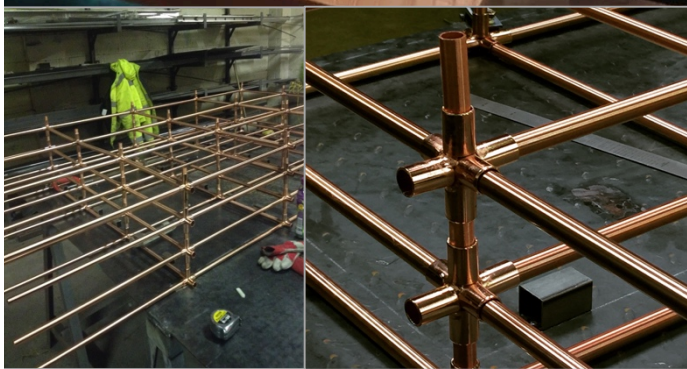
TESTIMONIAL:

"Top Job. Well Done." Mark Cotter, Contracts Director of Edward Davies

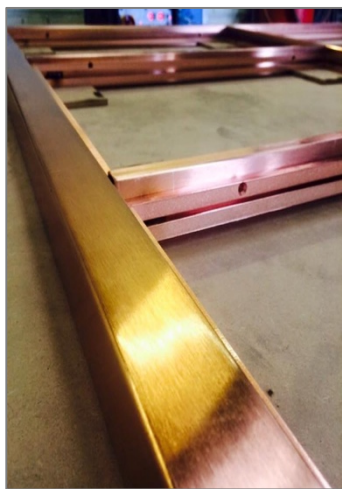
COPPER PLATED DISPLAY UNIT FOR GBK SOUTHAMPTON.

THIS SHELVING UNIT WAS TOO LARGE TO FIT INTO THE TANK FOR COPPER PLATING, SO WE FASHIONED 400 INDIVIDUALLY MADE CRUCIFIX INTERLOCKERS THAT ALLOWED US TO SLOT THE PIPEWORK TOGETHER.

THIS ENABLED THE COPPER US TO COPPER PLATE IN THE TANK PIECE SMALL AND ASSEMBLE THE INTERLOCKING SECTIONS ON SITE. PROBLEM SOLVED!



GBK'S IN SOUTHAMPTON, NEWPORT & KENSINGTON

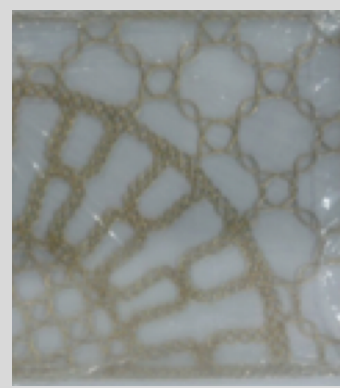
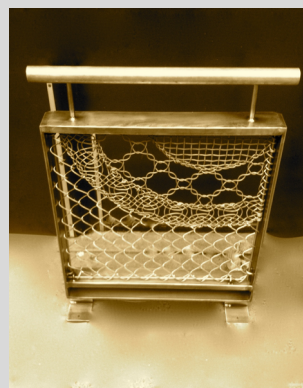


GBK MEET AND GREET SCREENS

We fabricated the Meet and Greet Screens for GBK. Copper plated within a raw steel lacquered frame.



THE **SONDHEIM** THEATRE - LONDON



THE SONDHEIM THEATRE – LONDON 2014

We were awarded this contract from Citizens Design Bureau in London.

Our role was to produce samples of Antique Brass Balustrading with Lace Infill Panels comprised from Solid Brass.

Sir Cameron Mackintosh took over the Ambassadors Theatre in London and renamed it The Sondheim Theatre. Mackintosh renamed the Theatre as a tribute to musicals composer Stephen Sondheim.

The plan is to completely rebuild the auditorium, complementing the original features. The Foyer and front-of- house facilities will also be much improved and enlarged.

The Sondheim Theatre opened on 5th June 1913 and was designed by W.G.R Sprague. The first production was Panthea by Monckton Hoffe.

SOLID BRASS CHAIR FRAME FOR **ZOFFANY**



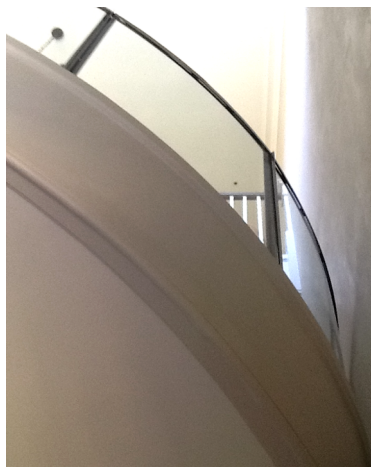
WALKER GREENBANK PLC - THE LUXURY INTERIOR FURNISHINGS GROUP FOR THEIR ZOFFANY SHOWROOM IN PARIS.

We are delighted to have been commissioned to fabricate a Brass Chair frame for Walker Greenbank PLC as part of their furnishings photo shoot at APETHORPE PALACE.

Our Brass Frame will then make it's way to their Zoffany Showroom in Paris as part of their window display.

BRASS TABLE FOR JO HAMILTON INTERIORS





HAND MADE HELICAL BALUSTRADE HAMPSTEAD LONDON, NW3

This helical was fashioned from mirror polished stainless steel on site.

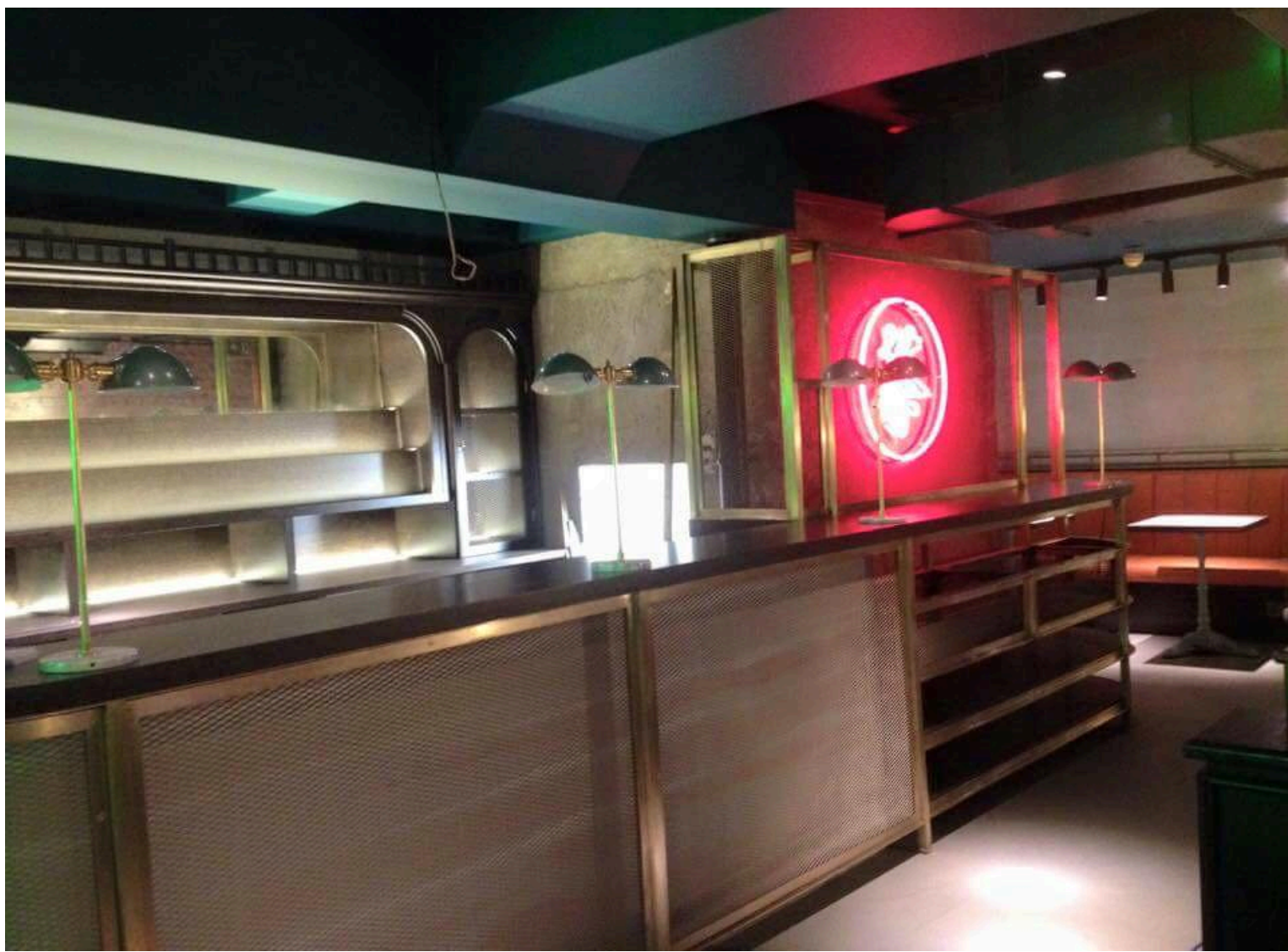
This was one of their most complex commissions to date due to the fact that no welding could be done in situ as the house was fully finished, furnished and lived in. The shape was helical and the internal and external radii were never the same at any point on the staircase. Each section of the balustrade and glass were different and had to be calculated within 3 mm.

The solution to this complicated project was to literally hand make every single piece and fit one individual piece at a time before commencing onto the next section.

This Stainless Steel and Glass Helical Balustrade that was literally hand made on site.
Designed by Nick Marsh of Lawray Architects.

This was an extremely complicated Balustrade, as it had multiple radii around the curves, which meant that each post and glass panel had to have a different radius and angle on it.



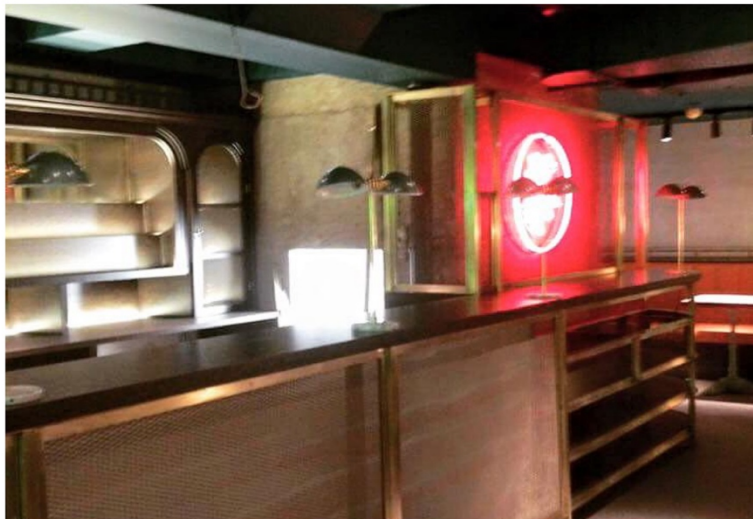


BRASS PROJECT FOR THE BUN HOUSE IN **SOHO** LONDON

Handmade Solid Brass Bar, Brass Bar Grille, Brass Mirror and Bronze Window Frame for the Bunhouse in Soho London.



BRASS PROJECT FOR THE BUN HOUSE IN SOHO LONDON





For all Metalwork, Brass, Bronze, Stainless Steel enquiries, please contact us on:

0800 6444 088

Email us at:

estimating@victoriajohnuk.com

Visit our website at:

www.victoriajohnuk.com

